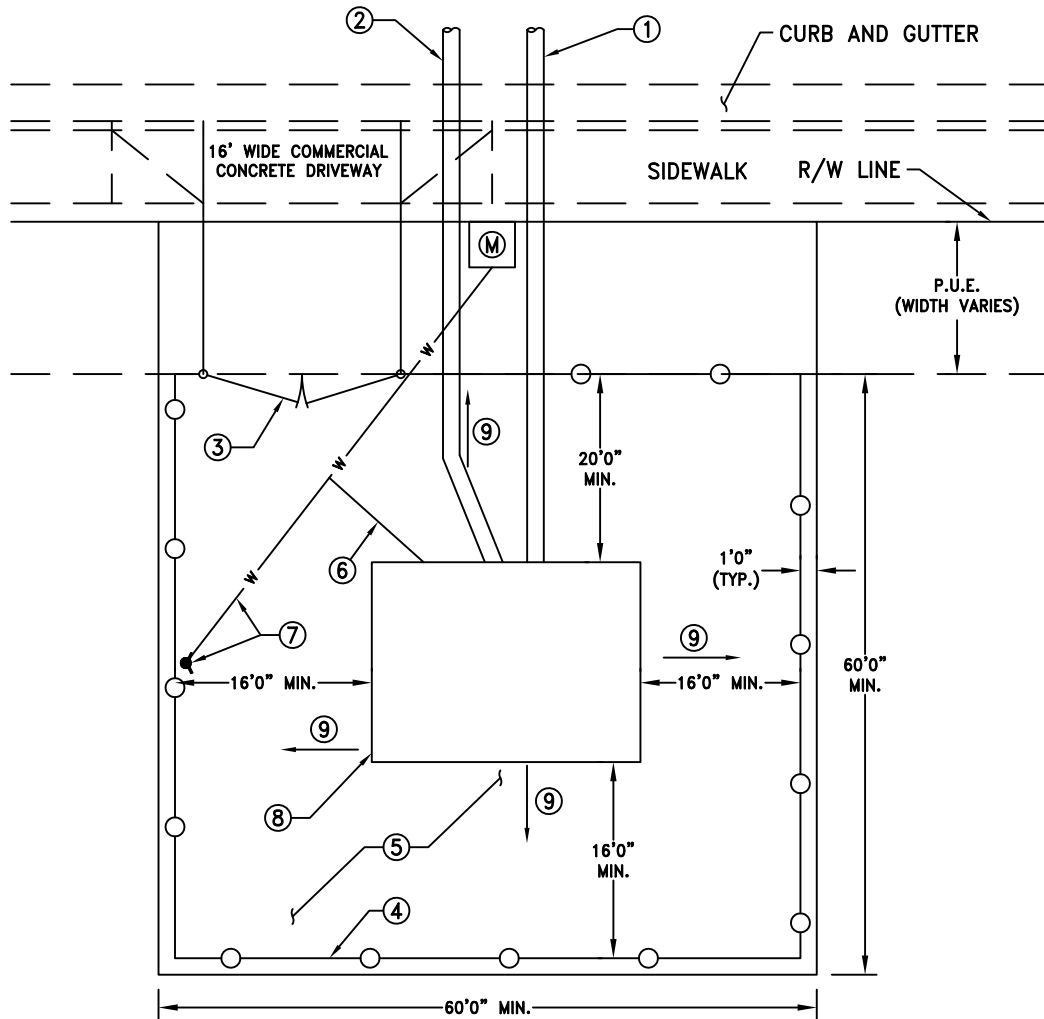


CONSTRUCTION NOTES:

- ① NEW PVC SDR-35 GRAVITY STORM DRAIN LINE GOING INTO LIFT STATION. (LINE SIZE PER PLANS)
- ② NEW PVC C900 PRESSURE STORM DRAIN PUMPBACK LINE GOING FROM LIFT STATION. (LINE SIZE PER PLANS)
- ③ INSTALL 16' WIDE x 6' HIGH DOUBLE SWING GATE WITH (3) STRANDS OF BARBED WIRE PER UDOT STANDARD DRAWING FG-6.
- ④ INSTALL 6' TALL CHAIN LINK FENCE WITH (3) STRANDS OF BARBED WIRE ON ARMS PER UDOT STANDARD DRAWING FG-6.
- ⑤ INSTALL 3" MINUS DRAIN ROCK 6" THICK IN THE ENTIRE FENCED IN AREA.
- ⑥ INSTALL 1" WATER LINE INTO BUILDING FOR SELF-PRIMING LIFT STATION.
- ⑦ INSTALL NEW FROST FREE HYDRANT AND DRAIN ROCK INCLUDING 1" WATER LINE FROM METER BOX.
- ⑧ LIFT STATION ENVELOPE PER ENGINEERED CONSTRUCTION PLANS FOR ALL BUILDINGS, CONCRETE, UTILITY METERS, ELECTRICAL EQUIPMENT, WET-WELL, ETC.
- ⑨ 2% MIN. SLOPE FROM TOP OF SLAB DOWN TO SURROUNDING GRADE.

NOTES:

1. THIS DETAIL DRAWING DOES NOT TAKE THE PLACE OF STAMPED ENGINEERING DRAWINGS FOR THE LIFT STATION SITE PLAN. THE DIMENSIONS SHOWN ON THIS DRAWING ARE PROVIDED ONLY TO SHOW THE MINIMUM CLEARANCES THAT MUST BE MET.
2. THE FOLLOWING UTILITIES MUST BE INSTALLED TO THE LIFT STATION SITE:
 CULINARY WATER
 FIBER INTERNET (IF AVAILABLE)
 POWER
 GAS



PLAN VIEW
N.T.S.



ENOCH CITY
 900 E MIDVALLEY RD
 Enoch, UT 84721
 Tel. (435) 586-1119

**SUBMERSIBLE STORM
 WATER LIFT STATION**

SCALE:
 N.T.S.
 DATE:
 APR. 2024

DETAIL No.:

D11.0E

SHEET:
 5 of 5